

# PRODUCT CATALOGUE 3.17



## **Innovative dental solutions**

- ✚ Filling materials
- ✚ Bonding systems
- ✚ Cements
- ✚ Desensitizer
- ✚ Relining materials

**That figures! TOKUYAMA – quality products from Japan**

# INNOVATIVE DENTAL SOLUTIONS

TOKUYAMA Corporation



Research & Development Centre in Tsukuba

## Japan – the land of the rising sun

The parent company of TOKUYAMA DENTAL, TOKUYAMA CORPORATION, now looks back on over 90 years of successful history as a diversified international chemical group. Over the years the product portfolio has been expanded continuously and it now contains a wide range of special-purpose chemical products, including product solutions for the dental market.

TOKUYAMA began developing and manufacturing dental materials over 30 years ago. Our philosophy of developing innovative dental solutions aims to make an ongoing and sustainable

contribution towards offering top-quality products and state-of-the-art solutions for dentistry.

Our always innovative technological developments contribute to continuous enhancement of the dental market. An important acknowledgement of this was currently experienced by our Research & Development team in 2017.

“DENTAL ADVISOR”, the internationally recognised organisation, honoured TOKUYAMA DENTAL as the supplier of the best product in three product categories.

TOKUYAMA DENTAL received an award for the best universal composite (ESTELITE SIGMA QUICK now 8 years in a row), the preferred desensitizer SHIELD FORCE PLUS and the best soft relining material (SOFRELINER TOUGH).

TOKUYAMA DENTAL products increase the efficiency of dental work and simultaneously allow optimal dental solutions.




TOKUYAMA DENTAL Deutschland GmbH, Altenberge

TOKUYAMA DENTAL Deutschland GmbH has its head office in Altenberge, near Münster. After having moved to the new facilities in 2016, TOKUYAMA DENTAL Deutschland is able to provide a much better service to its customers in Germany and Europe as well. If you have any inquiries or requests concerning products, that is where you will receive personal and professional advice.

# PRODUCTS

## Filling materials

<b>NEW</b>	ESTELITE ASTERIA	4
	ESTELITE COLOR	5
	ESTELITE SIGMA QUICK 	6
	ESTELITE POSTERIOR QUICK	7
	ESTELITE FLOW QUICK	8
	ESTELITE FLOW QUICK HIGH FLOW	9
	ESTELITE LV	10
<b>NEW</b>	ESTELITE BULK FILL FLOW	11

## Bonding systems

<b>NEW</b>	UNIVERSAL BOND	12
	BOND FORCE II	13
	EE-BOND & ETCHING GEL HV	14
	ONE-UP BOND F PLUS	15

## Cements

<b>NEW</b>	ESTECM II	16
	TOKUPOST	17
	UNIVERSAL PRIMER	18
	IONOTITE F	19

## Desensitizer

	SHIELD FORCE PLUS 	20
--	---	----

## Relining materials

	REBASE II FAST	21
	SOFRELINER TOUGH M & S 	22
	SILICONE REMOVER	23

# ESTELITE ASTERIA

Developed to realize simplified 2 step layering composite restorations  
as well as outstanding esthetic results.

**NEW**



## Indications

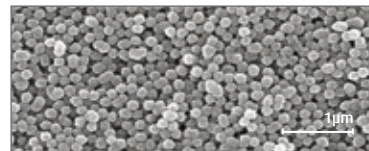
- ✦ Anterior and posterior areas
- ✦ Composite veneers
- ✦ Diastema closure
- ✦ Composite/ceramic repair

## Properties

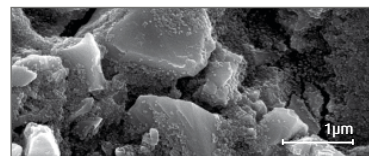
- ✦ Perfect restorations using just 2 shade layers
- ✦ Unique chameleon effect
- ✦ Rapid curing in 10 seconds
- ✦ Extended working time of 90 seconds
- ✦ Very high lustre durability
- ✦ Abrasion resistance
- ✦ Low linear shrinkage
- ✦ Optimal handling

## Technical information

### SEM images of the fillers



ESTELITE ASTERIA (TOKUYAMA DENTAL)



Venus Pearl (Kulzer)

Source: TOKUYAMA  
DENTAL R&D

## Pack sizes available

### Syringe Essential Kit:

- 7 syringes (4g each) in 7 shades  
A1B, A2B, A3B, A3.5B, A4B, NE, OcE

### Capsules Essential Kit:

- 105 capsules (0.2g each) in 7 shades  
15 x A1B, A2B, A3B, A3.5B, A4B, NE, OcE

### Refill:

- Single syringe (4g)
- 15 capsules (0.2g each)

**Custom Shade Selector** for 15 shades

## Available in 12 different shades

Dentin	(7)							
		A1B	A2B	A3B	A3.5B	A4B	B3B	BL
Enamel	(5)							
		NE	TE	YE	WE	OcE		

# ESTELITE ASTERIA

Developed to realize simplified 2 step layering composite restorations  
as well as outstanding esthetic results.

**NEW**



## Indications

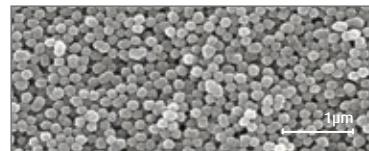
- ✦ Anterior and posterior areas
- ✦ Composite veneers
- ✦ Diastema closure
- ✦ Composite/ceramic repair

## Properties

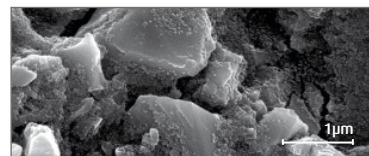
- ✦ Perfect restorations using just 2 shade layers
- ✦ Unique chameleon effect
- ✦ Rapid curing in 10 seconds
- ✦ Extended working time of 90 seconds
- ✦ Very high lustre durability
- ✦ Abrasion resistance
- ✦ Low linear shrinkage
- ✦ Optimal handling

## Technical information

### SEM images of the fillers



ESTELITE ASTERIA (TOKUYAMA DENTAL)



Venus Pearl (Kulzer)

Source: TOKUYAMA  
DENTAL R&D

## Pack sizes available

### Syringe Essential Kit:

- 7 syringes (4g each) in 7 shades  
A1B, A2B, A3B, A3.5B, A4B, NE, OcE

### Capsules Essential Kit:

- 105 capsules (0.2g each) in 7 shades  
15 x A1B, A2B, A3B, A3.5B, A4B, NE, OcE

### Refill:

- Single syringe (4g)
- 15 capsules (0.2g each)

**Custom Shade Selector** for 15 shades

## Available in 12 different shades

Dentin	(7)							
		A1B	A2B	A3B	A3.5B	A4B	B3B	BL
Enamel	(5)							
		NE	TE	YE	WE	OcE		

# ESTELITE SIGMA QUICK

Submicron composite with chameleon mimetic properties,  
perfect for enhancing your work.



## Indications

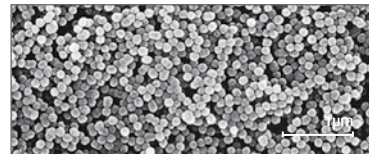
- ✦ Anterior and posterior areas
- ✦ Composite veneers
- ✦ Diastema closure
- ✦ Composite/ceramic repair

## Properties

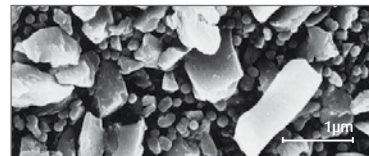
- ✦ Unique chameleon effect
- ✦ Rapid curing in 10 seconds
- ✦ Extended working time of 90 seconds
- ✦ High lustre durability
- ✦ Abrasion resistance
- ✦ Low linear shrinkage
- ✦ Optimal handling

## Technical information

### SEM images of the fillers



ESTELITE SIGMA QUICK (TOKUYAMA DENTAL)



Tetric EvoCeram (Ivoclar Vivadent)

Source: TOKUYAMA  
DENTAL R&D

## Pack sizes available

- Syringe Intro Kit
- Syringe System Kit

- Syringe Kit of 3
- Syringe Promo Kit
- Refill: Single syringe (3.8g)

- Capsule Intro Kit
- Refill: 20 capsules (0.2g each)
- Shade Selector with 20 shades

## Available in 20 different shades

Standard (14)



Bleach (2)  
Opalescent (3)  
Opaque (1)



# ESTELITE POSTERIOR

Composite for posterior restorations, highly resistant to abrasion and excellent physical properties, ideal with direct restorations in Class I and II.



## Indications

- ✦ Posterior area
- ✦ Composite/ceramic repair

## Properties

- ✦ Unique chameleon effect
- ✦ High physical properties
- ✦ Rapid curing in 10 seconds
- ✦ Optimal handling
- ✦ Low linear shrinkage
- ✦ High radiopacity

## Technical information

### Physical properties

Flexural strength	<b>209</b> MPa
Flexural modulus	<b>20,2</b> GPa
Compressive strength	<b>443</b> MPa
Radiopacity	<b>290</b> Al mm

Source: TOKUYAMA  
DENTAL R&D

## Pack sizes available

### Refill:

- Single syringe (4.2g)

## Available in 4 different shades



A1



A2



A3



CE

# ESTELITE FLOW QUICK

Medium viscosity composite that offers a wide range of shades, and the new and unique RAP technology, which reduces curing time by up to 75%.



## Indications

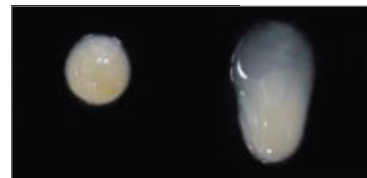
- ✦ Anterior and posterior areas
- ✦ Cavity liner
- ✦ Blocking out undercuts
- ✦ Composite/ceramic repair

## Properties

- ✦ Choice of two viscosities
- ✦ Rapid curing in 10 seconds
- ✦ Extended working time of 90 seconds
- ✦ High lustre durability
- ✦ Low shrinkage
- ✦ Excellent polishability

## Technical information

### Viscosities



Vertical position  
after 1 minute  
at 37°C



Horizontal position  
after 1 minute  
at 37°C

## Pack sizes available

### Syringe Kit of 3:

- 3 single syringes (1.8g or 3.6g each)  
in 3 shades A2, A3, A3.5

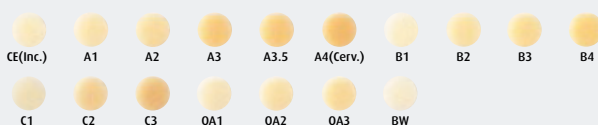
### Refill:

- Single syringe (1.8g)
- Single L-syringe (3.6g)

### Refill:

- 20 capsules (0.2g each)

## Available in 17 different shades



# ESTELITE FLOW QUICK HIGH FLOW

Low viscosity flowable composite that offers ideal flowability for cavity lining, superb esthetic features and excellent physical properties.



## Indications

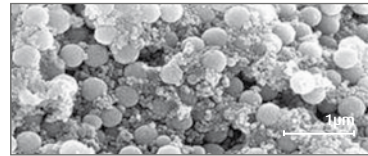
- ✦ Anterior and posterior areas
- ✦ Cavity liner
- ✦ Blocking out undercuts
- ✦ Composite/ceramic repair

## Properties

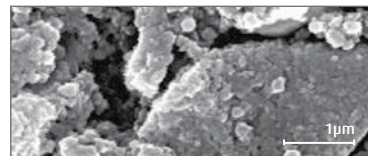
- ✦ Choice of two viscosities
- ✦ Rapid curing in 10 seconds
- ✦ Extended working time of 90 seconds
- ✦ High lustre durability
- ✦ Low shrinkage
- ✦ Excellent polishability

## Technical information

### SEM images of the fillers



ESTELITE FLOW QUICK High Flow (TOKUYAMA DENTAL)



Filtek Supreme XTE Flow (3M Espe)

Source: TOKUYAMA DENTAL R&D

## Pack sizes available

### Refill:

- Single syringe (3.6g)

### Refill:

- 20 capsules (0.2g each)

## Available in 4 different shades



A1



A2



A3



OPA2

# ESTELITE LV

Flowable composite with a high module of elasticity and three different kinds of viscosities.



## Indications

### ESTELITE LV High Flow:

- ✦ Small cavities, extended fissure sealing, cavity liner

### ESTELITE LV Medium Flow:

- ✦ All fields of application for flow composites

### ESTELITE LV Low Flow:

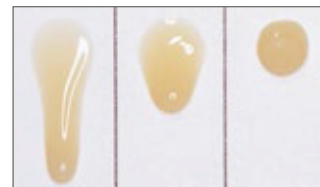
- ✦ Class V cavities, small cavities in classes I, II, III

## Properties

- ✦ Choice of three viscosities
- ✦ Chameleon effect
- ✦ Excellent polishability
- ✦ High lustre durability
- ✦ Low shrinkage
- ✦ Easy handling

## Technical information

### Viscosities



Highflow

Mediumflow

Lowflow

## Pack sizes available

### Refill:

- High Flow single syringe (3g)
- Medium Flow single syringe (3g)
- Low Flow single syringe (3g)

## Available in 3 (4) different shades



A1



A2



A3



A3.5

only Mediumflow

# ESTELITE BULK FILL FLOW

ESTELITE BULK FILL FLOW is a low viscosity, light-cured, radiopaque composite resin. This low stress flowable material can be placed by 4mm increments.



**NEW**

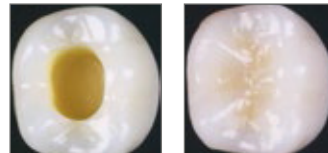
## Indications

- ✦ Direct anterior and posterior restorations
- ✦ Cavity liner
- ✦ Blocking out cavity undercuts prior to indirect restorations
- ✦ Repair of composite/ceramics

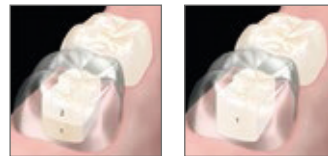
## Properties

- ✦ Reduced polymerisation stress due to new „edgeless“ composite fillers
- ✦ Sufficient opacity for esthetic restorations without capping layer
- ✦ Rapid curing in 10 seconds
- ✦ Excellent cavity adaption
- ✦ Self-levelling
- ✦ Controlled refractive index

## Technical information



Change of the refractive index during polymerisation process ensures esthetic results



Restoration without the need of an additional capping layer

## Pack sizes available

### Refill:

- Single syringe (3g)

### Refill:

- 20 capsules (0.2g each)

## Available in 5 different shades



A1

A2

A3

B1

U

# UNIVERSAL BOND

TOKUYAMA UNIVERSAL BOND is a two-component self-cured dental adhesive system for both direct and indirect restorations that can be used with self-etch, selective-etch and total-etch techniques. As a universal adhesive, TOKUYAMA UNIVERSAL BOND has been designed to be fully compatible with light-cured, self-cured and dual-cured composite materials.

**NEW**



## Indications

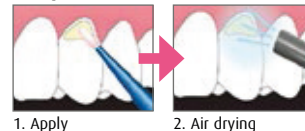
- ✦ Direct anterior and posterior restorations
- ✦ Intraoral repair
- ✦ Cementation of indirect restorations and veneers
- ✦ Bonding of core build-ups
- ✦ Bonding of denture resin
- ✦ Repair of denture
- ✦ Bonding of opaque resin to a metal base

## Properties

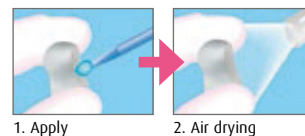
- ✦ All etching protocols
- ✦ All prosthetic materials
- ✦ Fully compatible with all composite materials (no activator needed)
- ✦ No application time
- ✦ No light-curing
- ✦ Stable against dehydration condensation for reliable adhesion also on (glass-) ceramics
- ✦ Can be used as primer for repairs

## Clinical use

### Composite – Direct restoration



### Prosthesis – Indirect restoration



## Pack sizes available

### Complete Kit:

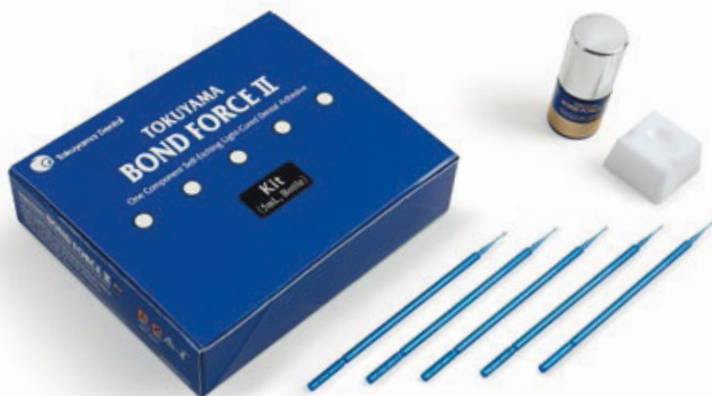
- 2 x 5ml bottle
- 25 microbrushes
- 1 x mixing dish
- 5 x disposable mixing dish

### Refill:

- 1 x 5ml bottle Bond A
- 1 x 5ml bottle Bond B
- 50 x disposable mixing dish

# BOND FORCE II

“One bottle” single component bonding agent that goes beyond the 7th generation.  
Thanks to its new formulation, it does not require refrigeration  
and moreover it reduces application time by 15 seconds.



## Indications

- ✦ Light-curing, self-etching single-component adhesive
- ✦ Adheres to prepared and unprepared enamel/dentin
- ✦ Repair material for ceramics and composite

## Properties

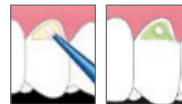
- ✦ Unique adhesion due to innovative, self-reinforcing 3D monomer
- ✦ Excellent bond strength
- ✦ Ultra-rapid, just 25 seconds
- ✦ No storing in a fridge
- ✦ Fluoride-releasing
- ✦ Pleasantly thin, uniform film layer
- ✦ Optimal distribution in stepped cavities
- ✦ Perfect marginal integrity

### Pen properties

- ✦ Over 33% saving on material
- ✦ Fill level indicator
- ✦ Uniform dosage with a click

## Clinical use

### Application 10 sec.



Apply BOND FORCE II

### Drying 5 sec.



5 sec. gentle air-drying

### Curing 10 sec.



Light-curing

## Pack sizes available

### Complete Bottle Kit:

- 1 x 5ml bottle
- 25 microbrushes
- 1 x mixing dish

### Refill:

- 1 x 5ml bottle

### Pen Intro Kit:

- 1 x 2ml pen
- 25 microbrushes
- 1 x mixing dish

### Refill:

- 2 x 2ml pen

### Unit Dose Standard Kit:

- 50 x 0.1ml Unit Dose
- 50 microbrushes

# EE-BOND & ETCHING GEL HV

Dental adhesive system designed for selective-etch technique, which is considered the ideal approach to obtain a good seal of margins and dentin simultaneously.



## Indications

- ✦ Light-curing, self-etching single-component adhesive with high-viscosity etching gel for etching the enamel
- ✦ Adheres to prepared and unprepared enamel/dentin
- ✦ Repair material for ceramics and composite

## Properties

- ✦ Extremely high bond strength
- ✦ Perfect marginal integrity
- ✦ Unique adhesion due to innovative, self-reinforcing 3D monomer
- ✦ Short treatment time due to easy handling
- ✦ Little technique sensitivity
- ✦ Fluoride-releasing
- ✦ Avoidance of post-operative sensitivity
- ✦ High viscosity etching gel can be applied exactly

## Clinical use

Etching and irrigation **10 sec.**



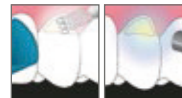
Apply ETCHING GEL HV and rinse afterwards

Air-drying and bonding **>10 sec.**



Air dry and apply EE-BOND

Air-drying and light-curing **20 sec.**



Finally, air dry and then light-cure

## Pack sizes available

### Complete Kit:

- 1 x 5ml bottle
- 1 x 2.5ml syringe of etching gel
- 25 microbrushes
- 1 x mixing dish
- 10 applicator tips (superfine)

### Refill:

- 1 x 5ml bottle
- 2 x 2.5ml syringe of etching gel
- 50 applicator tips (superfine)

# ONE-UP BOND F PLUS

One-Up Bond F Plus is a dentin-enamel self-etching (all-in-one) adhesive that simplifies the clinical procedure. It eliminates the need for preliminary treatment of the tooth and allows to perform immediate restorations with composites.



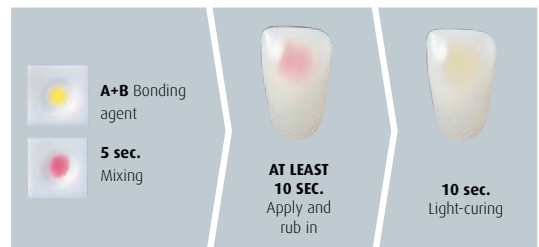
## Indications

- ✦ Light-curing adhesive with visual support for composite fillings
- ✦ Can be used for all cavity classes

## Properties

- ✦ Error minimisation due to visual control
- ✦ Much shorter treatment time due to easy handling
- ✦ Secure adhesion due to extremely reliable bond strength
- ✦ Fluoride-releasing
- ✦ No etching, no irrigation or drying
- ✦ Quick'n Easy Box – user-friendly handling

## Clinical use



## Pack sizes available

### Complete Kit:

- 2 x 5ml bottle
- Quick'n Easy Box
- 1 x Mixing dish
- 50 applicator tips incl. holder

### Refill:

- Fluid A (5ml)
- Fluid B (5ml)
- 50 applicator tips incl. holder

# ESTEC EM II

ESTEC EM II is a dual-cure (light and/or self-cure), radiopaque, adhesive resin cement system with excellent handling, esthetic and adhesive properties to teeth and all prosthetic materials.

**NEW**



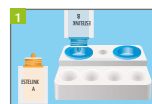
## Indications

- ✦ Cementation of indirect restorations (each prosthetic material)
- ✦ Repair of fractured crowns
- ✦ Cementation of veneers
- ✦ Cementation of adhesion bridges
- ✦ Cementation of metal or resin cores, metal or glass-fiber posts

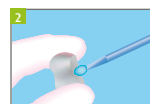
## Properties

- ✦ Universally usable
- ✦ Reliable bond strength to tooth structure and prosthesis
- ✦ Excellent physical properties and high wear resistance
- ✦ Low water absorption and low solubility
- ✦ Thin film thickness
- ✦ Outstanding esthetics and color stability
- ✦ Good radiopacity
- ✦ Simple handling and easy removal of excess material

## Clinical use



Mixing UNIVERSAL BOND A + B



Apply mixed UNIVERSAL BOND to the surface of the restoration



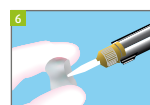
Apply mild air to the surface



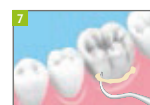
Apply the mixed UNIVERSAL BOND to the surface



Apply mild air continuously, then strong air to the surface



Apply the mixed ESTEC EM II PASTE to the surface of the restoration, place the restoration on the tooth with firm pressure



Removal of excess ESTEC EM II PASTE



Final ESTEC EM II PASTE hardening by light curing

## Pack sizes available

### Complete Kit (Universal only):

- Paste universal (9.4g)
- Universal Bond A (5ml)
- Universal Bond B (5ml)
- 15 x applicator tips
- 5 x applicator tips S
- 5 x nozzle for mini mixing tip S
- 25 x microbrushes
- 1 x mixing dish
- 5 x disposable mixing dish

### Refill:

- Paste universal (9.4g)
- Paste brown (9.4g)
- Paste clear (9.4g)
- Paste white-opaque (9.4g)
- Universal Bond A (5ml)
- Universal Bond B (5ml)
- 40 x applicator tips
- 40 x applicator tips S
- 40 x nozzle for mini mixing tip S

## Available in 4 different shades



Clear



Universal



Brown



White-opaque

# TOKUPOST

Your pre-prosthetic build up requires that your post-endodontic treatment has a solid foundation. TOKUPOST will be your esthetic and reliable basement.



## Indications

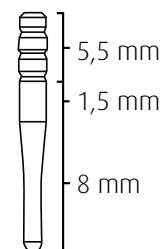
- ✦ In case of insufficient residual tooth substance (more than one missing coronal wall)

## Properties

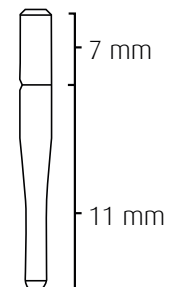
- ✦ Quartz fibers for optimal light transmission
- ✦ High translucency
- ✦ Flexural modulus similar to dentin
- ✦ Calibrated drill
- ✦ Excellent radiopacity
- ✦ Color coding
- ✦ Good biocompatibility
- ✦ Verifier

## Technical information

### Type 15R



### Type 18S



## Pack sizes available

### Master Kit:

- 5 x posts 15R55 (ø 0,55 mm apical / 1,05 mm coronal)
- 5 x posts 15R75 (ø 0,75 mm apical / 1,25 mm coronal)
- 5 x posts 15R95 (ø 0,95 mm apical / 1,45 mm coronal)
- 5 x posts 18S55 (ø 0,55 mm apical / 1,25 mm coronal)
- 5 x posts 18S75 (ø 0,75 mm apical / 1,45 mm coronal)
- 5 x posts 18S95 (ø 0,95 mm apical / 1,65 mm coronal)
- 3 x calibrated drill (ø 0,55 / 0,75 / 0,95 mm)
- 3 x verifier (ø 0,55 / 0,75 / 0,95 mm)

### Trial Kit:

- 5 x posts 15R75 (ø 0,75 mm apical / 1,25 mm coronal)
- 5 x posts 18S75 (ø 0,75 mm apical / 1,45 mm coronal)
- 1 x calibrated drill
- 1 x verifier

### Refill:

- 20 x posts 15R55 (ø 0,55 mm apical / 1,05 mm coronal)
- 20 x posts 15R75 (ø 0,75 mm apical coronal I / 1,25 mm coronal)
- 20 x posts 15R95 (ø 0,95 mm apical / 1,45 mm coronal)
- 20 x posts 18S55 (ø 0,55 mm apical / 1,25 mm coronal)
- 20 x posts 18S75 (ø 0,75 mm apical / 1,45 mm coronal)
- 20 x posts 18S95 (ø 0,95 mm apical / 1,65 mm coronal)
- 3 x calibrated drills (ø 0,55 / 0,75 / 0,95 mm)
- 3 x verifier (ø 0,55 / 0,75 / 0,95 mm)

# UNIVERSAL PRIMER

TOKUYAMA UNIVERSAL PRIMER is a primer containing adhesive components that interact with various kinds of prosthetic materials.



## Indications

- ✦ Pretreatment of each prosthetic material in preparation for bonding of polymerisable resin materials, such as:
  - 1) Bonding of inlays, onlays, crowns, bridges, veneers, cores, artificial teeth, orthodontic brackets etc.
  - 2) Repair of ceramic, metal and composite materials (including porcelain fused metals).
  - 3) Bonding of denture resin to metal base, clasp or attachment
  - 4) Repair of denture with metal base, clasp or attachment
  - 5) Bonding of opaque resin to a metal base in the fabrication of resin-faced stainless steel crowns

## Properties

- ✦ Easy to use
- ✦ Reliable bond strength to a wide variety of prosthetic materials
- ✦ Low technique sensitivity
- ✦ Economical due to its versatility

## Technical information

### Physical properties

Precious metal	23.0 MPa
Non-precious metal	23.8 MPa
Glass ceramics	33.5 MPa
Resin composite	21.8 MPa
Zirconia	25.1 MPa

Source: TOKUYAMA  
DENTAL R&D

## Pack sizes available

### Complete Kit:

- Bottle Primer A + Primer B (2ml each)

### Refill:

- Bottle Primer A (2ml)
- Bottle Primer B (2ml)

# IONOTITE F

Glass ionomer cement modified with resin; the self-hardening properties and high fluoride release make this cement easy to use and with high esthetical performances.



## Indications

- ✦ Cementation of porcelain bonded to metal (PBM) crowns and bridges
- ✦ Cementation of cast crowns and bridges with acrylic facings
- ✦ Cementation of inlays, onlays, crowns and bridges made of metal
- ✦ Cementation of cast posts and cores

## Properties

- ✦ Very high level of adhesion to all metals
- ✦ No etching, bonding or priming required
- ✦ Long-term resistance to water and saliva
- ✦ Long-lasting release of fluoride ions
- ✦ Thin film thickness

## Clinical use

### Treatment time

#### Mixing

#### Complete Curing

Start	1 minute	2 minutes	3 minutes	4 minutes	5 minutes	6 minutes
Removal of excess material						

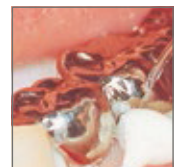
### Application



Mixing



Application



Removal of excess

## Pack sizes available

### Complete Kit:

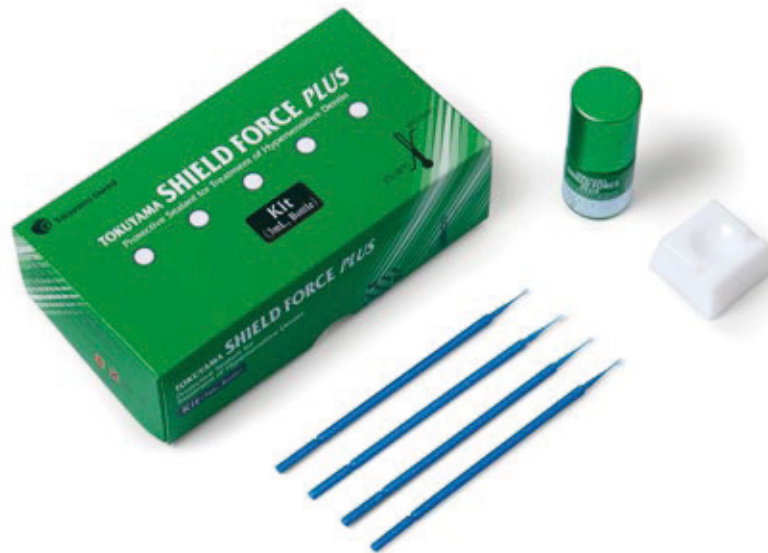
- Powder (20g)
- Fluid (6.4ml)
- 1 x powder measuring scoop
- 1 x mixing pad

### Refill:

- Powder (20g)
- Fluid (6.4ml)

# SHIELD FORCE PLUS

Protective sealant for the treatment of hypersensitive dentin,  
with “double block” mechanism.



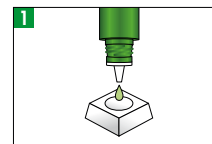
## Indications

- ✦ Treatment of hypersensitive dentin
- ✦ Reduction of abrasion and erosion of exposed cervical dentin
- ✦ Alleviation and/or prevention of tooth sensitivity following tooth preparation for direct or indirect restorations.

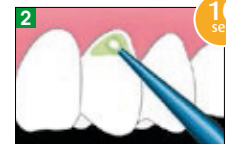
## Properties

- ✦ Rapid and effective treatment of hypersensitive dentin
- ✦ Excellent sealing effect
- ✦ Long-lasting protective layer
- ✦ Easy handling
- ✦ Thin film layer

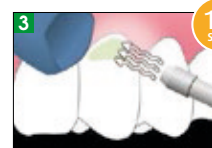
## Clinical use



Dispensing



Apply and wait 10 seconds



5 seconds of light air-drying and 5 seconds of intensive air-drying



Light cure for 10 seconds

## Pack sizes available

### Complete Kit:

- 1 x 3ml bottle
- 25 x microbrushes
- 1 x mixing dish

### Refill:

- 1 x 3ml bottle

# REBASE II FAST

Innovative resin for permanent chairside direct hard denture relines.











## Indications

- ✦ Long-lasting, hard relining material
- ✦ Relining complete dentures
- ✦ Relining partial dentures
- ✦ Following soft relining, when the mucosa has healed
- ✦ Chairside use

## Properties

- ✦ MMA-free
- ✦ No development of odour
- ✦ Excellent precision fit / optimal comfort
- ✦ Minimal generation of heat
- ✦ Time-saving
- ✦ Reduces laboratory costs

## Clinical use

	1. Prepare the prosthesis		2. Application of adhesive
	3. Dispensing, mixing and applying Rebase II		4. Inserting the prosthesis
	5. Articulation motions		6. Working on the prosthesis
	7. To increase the hardness: soak in Tokuso Resin Hardener		8. Finishing and polishing

Check precision fit before and after treatment.

## Pack sizes available

### Complete Kit:

- Powder (80g)
- Fluid (50ml)
- Adhesive (15ml)
- Measuring cup, pipette, mixing crucible, spatula, plastic cup, brush
- Hardener (48g) and scoop

### Refill:

- Powder (80g)
- Fluid (50ml)
- Adhesive (15ml)
- Hardener (48g)

# SOFRELINER TOUGH M & S

SOFRELINER TOUGH is an addition-cured silicone chairside soft lining material for removable dentures.



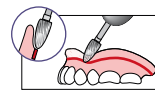
## Indications

- ✦ Pain caused by sharp ridges of alveolar bone and atrophy of mucosa
- ✦ Poor retention caused by extreme ridge atrophy
- ✦ Major undercuts or maxillary/mandibular tori
- ✦ Retention of over dentures before the final attachment is placed
- ✦ **Temporary relining or tissue conditioning , e.g. after setting of implants or other surgeries (TOUGH S only)**

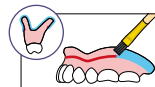
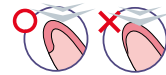
## Properties

- ✦ 100% addition-cured silicone
- ✦ Shore hardness 43 (M) / 24 (S)
- ✦ 2 ½ years shelf life (M) / 1/2 years (S)
- ✦ Extreme tear resistance
- ✦ Surface and shade stability
- ✦ Excellent precision fit

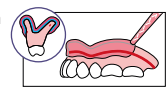
## Clinical use



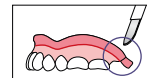
1. Beveling the edges



2. Application of the primer



3. Apply SOFRELINER TOUGH



4. Finishing the prosthesis



5. After 2 years use

## Pack sizes available

### Complete Kit Medium:

- Cartridge (2 x 27g)
- Primer (10ml)
- 10 x mixing tips XS
- Polishing system

### Refill:

- Cartridge (2 x 27g)
- Primer (10ml)
- Mixing tips XS or S, 50 pcs. each
- Polishing system
- Dispensing gun

### Complete Kit Soft:

- Cartridge (2 x 26g)
- Primer (10ml)
- 10 x mixing tips XS
- Polishing system

### Refill:

- Cartridge (2 x 26g)
- Primer (10ml)
- Mixing tip XS or S, 50 pcs. each
- Polishing system
- Dispensing gun

# SILICONE REMOVER

Auxiliary agent used to remove silicone-based resilient denture liner from the acrylic denture, and silicone rubber impression material from the impression resin tray.



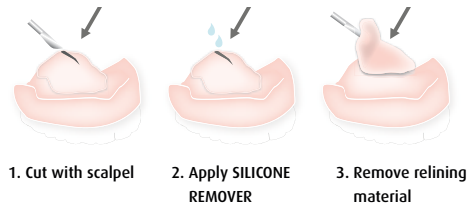
## Indications

- ✚ For removing elastic relining material, silicone-based
- ✚ For removing soft silicone impression materials

## Properties

- ✚ Easy handling
- ✚ Removes soft relining materials from the prosthesis in seconds without leaving any residues
- ✚ No painstaking removal of old material by grinding is required

## Clinical use



## Pack sizes available

- 1 x 7ml bottle



**Tokuyama Dental Deutschland GmbH**  
**Am Landwehrbach 5 | 48341 Altenberge**  
**Tel.: +49 (0)2505 938513 | Fax: +49 (0)2505 938515**  
**[www.tokuyama-dental.de](http://www.tokuyama-dental.de) | [info@tokuyama-dental.de](mailto:info@tokuyama-dental.de)**